

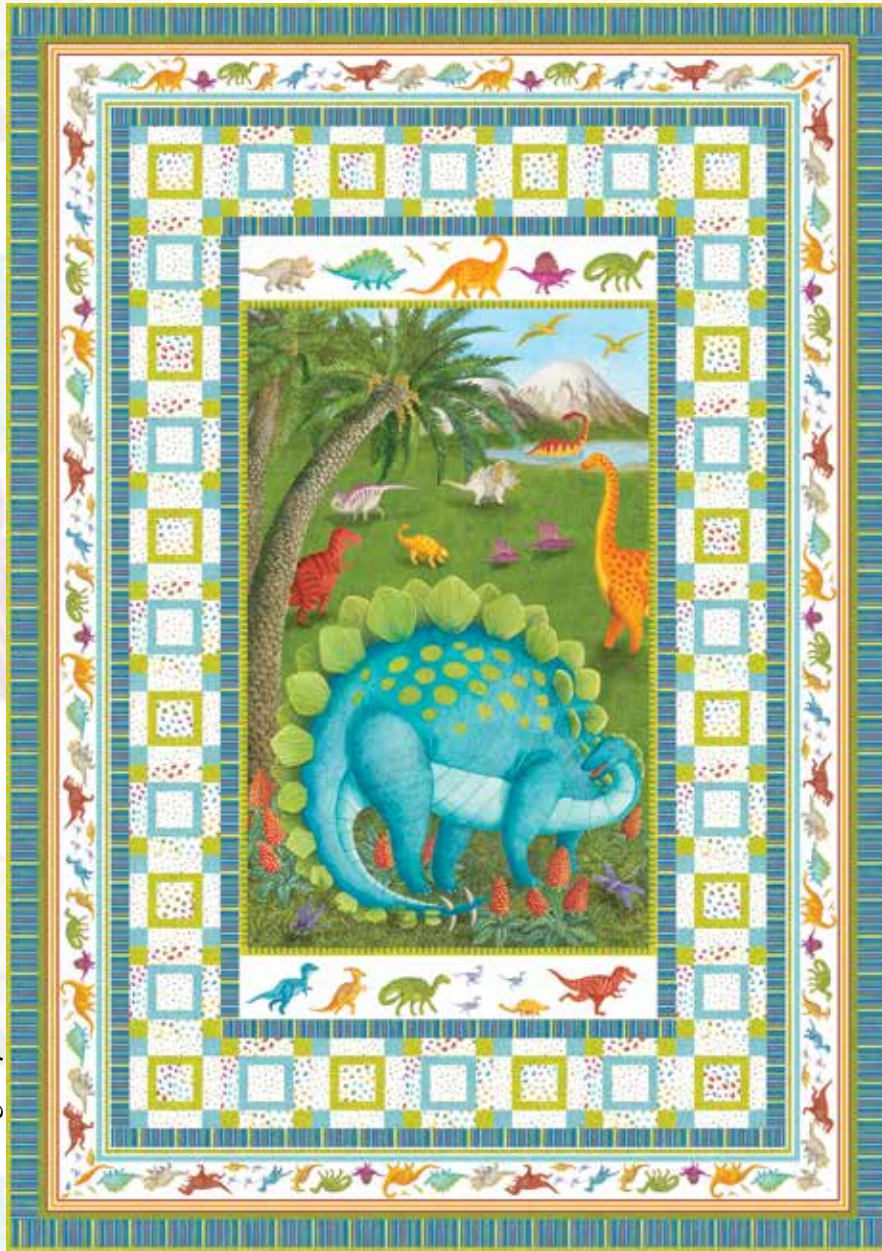
# Dino Party

A Free Project Sheet  
NOT FOR RESALE

By Nutshell Designs

Quilt 1

Quilt Design by Heidi Pridemore



Skill Level: Advanced Beginner

facebook



Finished Quilt Size: 48" x 68"  
49 West 37th Street, 14th floor, New York, NY 10018  
Toll Free: 800-294-9495  
fax: 212-679-4578  
www.blankquilting.net

# DINO PARTY

Quilt 1

Finished Quilt Size: 48" x 68"

## Fabrics in the Dino Party Collection



24" Dinosaur Panel - Lt. Blue  
9050P-17



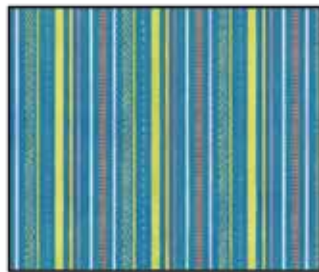
Dinosaur Patch - Blue  
9051-70



Tossed Dinosaur Large - Lt. Blue  
9052-17



Mini Dot - White  
9053-01



Mini Stripe - Blue  
9054-70



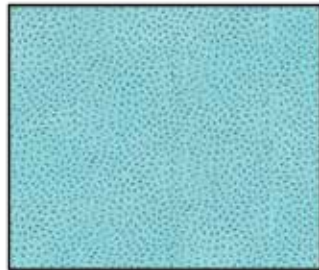
Tossed Dino Mini - White  
9055-01



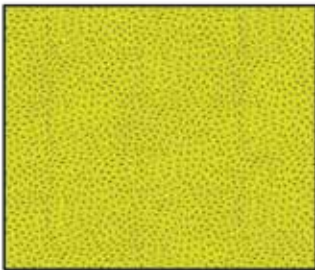
Dinosaur Prints - White  
9056-01



Stripe with Dinosaurs - Blue  
9057-70



Texture - Lt. Blue  
9059-17



Texture - Lt. Green  
9059-64



Texture - Rust  
9059-80



36" Book Panel - Blue  
9058P-70



Scenic Allover - Green  
9060-66

### Materials

1 panel	24" Dinosaur Panel - Lt. Blue (A)	9050P-17
1 yard	Mini Stripe - Blue (B)	9054-70
½ yard	Dinosaur Prints - White (C)	9056-01
½ yard	Mini Dot - White (D)	9053-01
⅞ yard	Texture - Lt. Green (E)	9059-64*
⅞ yard	Texture - Lt. Blue (F)	9059-17
2 yards	Stripe with Dinosaurs - Blue (G)	9057-70
4 ¼ yards	Dinosaur Patch - Blue (Backing)	9051-70

\*Includes binding

### Cutting Instructions

Please note: all strips are cut across the width of fabric (WOF) from selvage to selvage edge unless otherwise noted.

#### From the 24" Dinosaur Panel - Lt. Blue (A), fussy cut:

- (1) 23 ½" x 43 ½" panel.

#### From the Mini Stripe - Blue (B), cut:

- (4) 2" x WOF strips. Sew the strips together end to end with diagonal seams and cut (2) 2" x 65 ½" strips.
- (3) 2" x WOF strips. Sew the strips together end to end with diagonal seams and cut (2) 2" x 48 ½" strips.
- (3) 1 ½" x WOF strips. Sew the strips together end to end with diagonal seams and cut (2) 1 ½" x 55 ½" strips.
- (2) 1 ½" x 37 ½" WOF strips.
- (3) 2" x WOF strips. Sew the strips together end to end with diagonal seams and cut (2) 2" x 43 ½" strips.
- (2) 2" x 26 ½" WOF strips.

#### From the Dinosaur Prints - White (C), cut:

- (1) 2 ½" x WOF strip. Sub-cut (16) 2 ½" squares.
- (6) 1 ½" x WOF strips. Sub-cut (64) 1 ½" x 3 ½" strips.

#### From the Mini Dot - White (D), cut:

- (1) 2 ½" x WOF strip. Sub-cut (16) 2 ½" squares.
- (6) 1 ½" x WOF strips. Sub-cut (64) 1 ½" x 3 ½" strips.

#### From the Texture - Lt. Green (E), cut:

- (3) 1 ½" x WOF strips. Sub-cut (64) 1 ½" squares.
- (3) 1" x WOF strips. Sub-cut (32) 1" x 3 ½" strips.
- (2) 1" x WOF strips. Sub-cut (32) 1" x 2 ½" strips.
- (6) 2 ½" x WOF strips for the binding.

#### From the Texture - Lt. Blue (F), cut:

- (3) 1 ½" x WOF strips. Sub-cut (64) 1 ½" squares.
- (3) 1" x WOF strips. Sub-cut (32) 1" x 3 ½" strips.
- (2) 1" x WOF strips. Sub-cut (32) 1" x 2 ½" strips.

#### From the Stripe with Dinosaurs - Blue (G), cut:

- (2) 4 ½" x 69" length of fabric (LOF) strips.
- (2) 4 ½" x 49" LOF strips.

#### From the Dinosaur Patch - Blue (Backing), cut:

- (2) 76" x WOF strips for the backing. Sew the strips together and trim to make the 56" x 76" back.

### Sewing Instructions

1. Sew (1) 2" x 43 ½" Fabric B strip to each side of the 23 ½" x 43 ½" Fabric A panel. Sew (1) 2" x 26 ½" Fabric B strip to the top and to the bottom of the Fabric A panel. Trim the block to measure 25 ½" x 45 ½" to make the Center Block (Fig. 1).

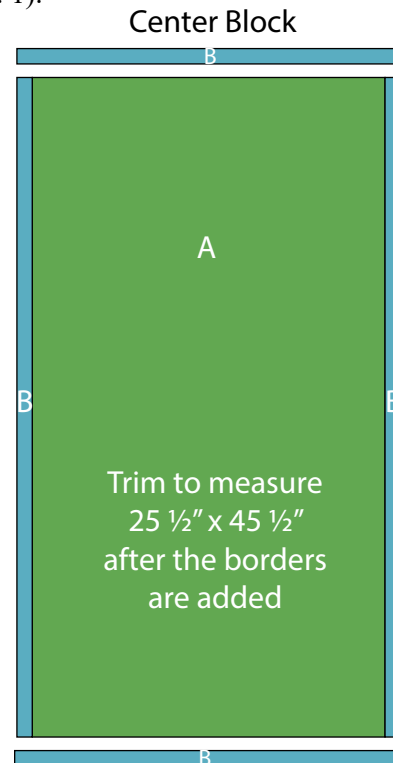


Fig. 1

2. Sew (1) 1" x 2 ½" Fabric E strip to each side of (1) 2 ½" Fabric C square. Sew (1) 1" x 3 ½" Fabric E strip to the top and to the bottom of the Fabric C square strip to make (1) Unit 1 block (Fig. 2). Repeat to make (16) Unit 1 blocks total.

3. Sew (1) 1 ½" x 3 ½" Fabric D strip to each side of (1) Unit 1 block. Sew (1) 1 ½" Fabric F square to each end of (1) 1 ½" x 3 ½" Fabric D strip. Repeat to make a second strip. Sew the strips to the top and to the bottom of the Unit 1 block to make (1) Block One square (Fig. 3). Repeat to make (16) Block One squares total.

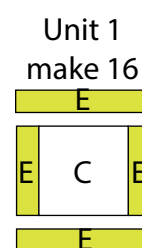


Fig. 2

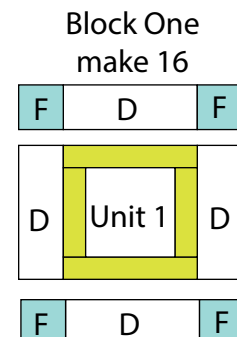
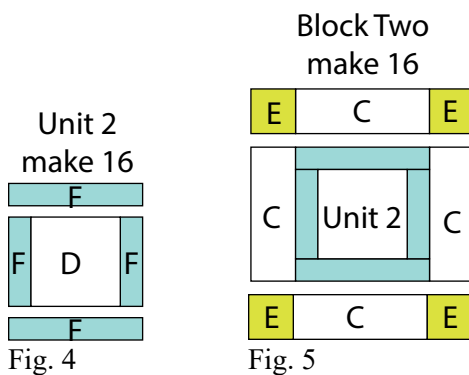


Fig. 3

4. Sew (1) 1" x 2 1/2" Fabric F strip to each side of (1) 2 1/2" Fabric D square. Sew (1) 1" x 3 1/2" Fabric F strip to the top and to the bottom of the Fabric D square strip to make (1) Unit 2 block (Fig. 4). Repeat to make (16) Unit 2 blocks total.

5. Sew (1) 1 1/2" x 3 1/2" Fabric C strip to each side of (1) Unit 2 block. Sew (1) 1 1/2" Fabric E square to each end of (1) 1 1/2" x 3 1/2" Fabric C strip. Repeat to make a second strip. Sew the strips to the top and to the bottom of the Unit 2 block to make (1) Block Two square (Fig. 5). Repeat to make (16) Block Two squares total.



### Quilt Top Assembly

(Refer to the *Quilt Layout while assembling.*)

6. Sew (5) Block Two squares and (4) Block One squares together, alternating them. Repeat to make a second strip. Sew (1) strip to each side of the Center Block.

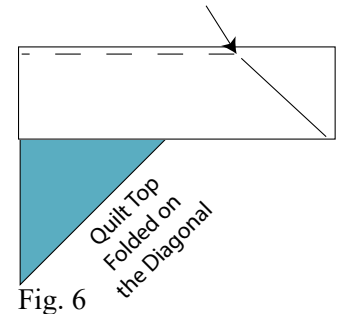
7. Sew (4) Block One squares and (3) Block Two squares together, alternating them. Repeat to make a second strip. Sew the strips to the top and to the bottom of the Center Block.

8. Sew (1) 1 1/2" x 55 1/2" Fabric B strip to each side of the Center Block. Sew (1) 1 1/2" x 37 1/2" Fabric B strip to the top and to the bottom of the Center Block.

9. Center (1) 4 1/2" x 69" Fabric G strip on (1) side of the Center Block and pin in place. Start sewing the strip a 1/4" from the top edge of the block and stop a 1/4" from the bottom edge. **DO NOT TRIM THE EXCESS.** Repeat with the opposite side.

10. Repeat Step 9 to sew (1) 4 1/2" x 49" Fabric G strip to the top and to the bottom of the Center Block, making sure to stop and start 1/4" away from each end of the block. To miter each corner, fold the Center Block on a diagonal, wrong side together. This should line up the strips from adjacent sides (Fig. 6).

11. Starting at the sewn seam (represented by the arrow in Figure 6), draw a 45-degree line to the edge of the fabric. Sew on the drawn line. Trim the excess fabric leaving a 1/4" seam. Repeat this step with the remaining corners.

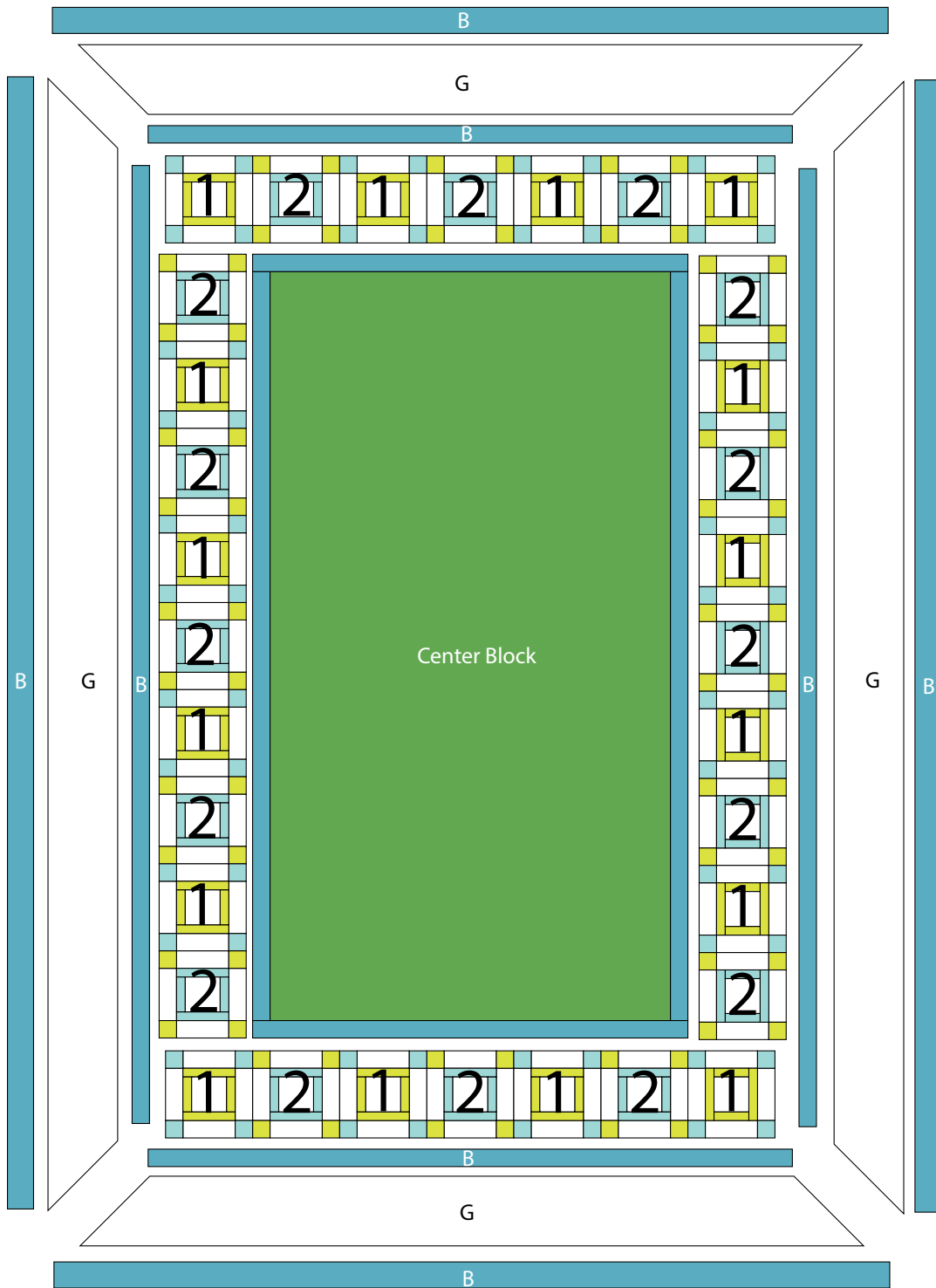


12. Sew (1) 2" x 65 1/2" Fabric B strip to each side of the Center Block. Sew (1) 2" x 48 1/2" Fabric B strip to the top and to the bottom of the Center Block to make the quilt top.

13. Layer and quilt as desired.

14. Sew the (6) 2 1/2" x WOF Fabric E strips together, end to end with 45-degree seams, to make the binding. Fold this long strip in half lengthwise with wrong sides together and press.

15. Bind as desired.



Quilt Layout

Every effort has been made to ensure that all projects are error free. All the information is presented in good faith, however no warranty can be given nor results guaranteed as we have no control over the execution of instructions. Therefore, we assume no responsibility for the use of this information or damages that may occur as a result. When errors are brought to our attention, we make every effort to correct and post a revision as soon as possible. Please make sure to check [www.blankquilting.net](http://www.blankquilting.net) for pattern updates prior to starting the project. We also recommend that you test the project prior to cutting for kits. Finally, all free projects are intended to remain free to you and are **not for resale**.